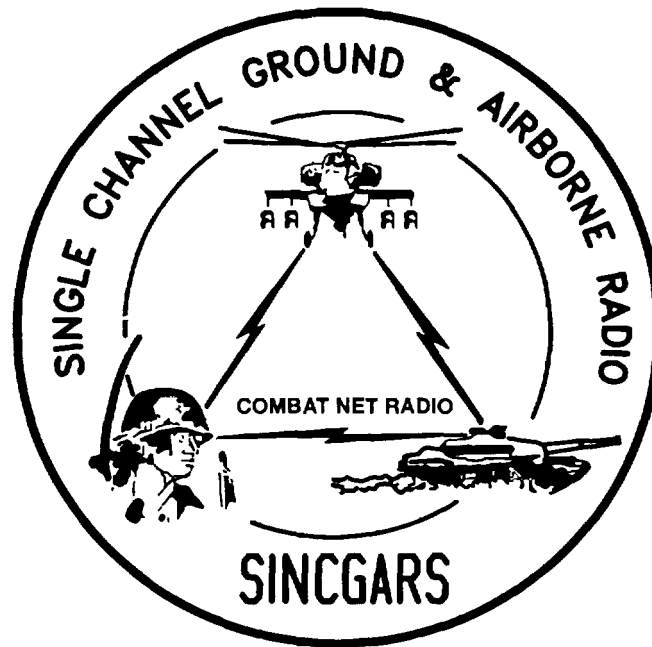


TECHNICAL BULLETIN



INSTALLATION INSTRUCTIONS FOR  
INSTALLATION KIT,  
ELECTRONIC EQUIPMENT, MK-2408/VRC  
(NSN 5895-01-260-0166) (EIC: N/A)  
TO PERMIT INSTALLATION OF RADIO SET  
AN/VRC-92 SERIES  
INTO  
MULTIPLE LAUNCH ROCKET SYSTEM (MLRS),  
M270

Approved for public release; distribution is unlimited.  
HEADQUARTERS, DEPARTMENT OF THE ARMY  
1 SEPTEMBER 1993

**INSTALLATION INSTRUCTIONS FOR  
INSTALLATION KIT,  
ELECTRONIC EQUIPMENT, MK-2408/VRC  
(NSN 5895-01-260-0166) (EIC: N/A)  
TO PERMIT INSTALLATION OF RADIO SET  
AN/VRC-92 SERIES  
INTO  
MULTIPLE LAUNCH ROCKET SYSTEM (MLRS),  
M270**

**REPORTING OF ERRORS AND RECOMMENDING IMPROVEMENTS**

You can help improve this manual. If you find any mistakes or if you know of a way to improve the procedures, please let us know. Mail your letter, DA Form 2028 (Recommended Changes to Publications and Blank Forms), or DA Form 2028-2 located in the back of this manual direct to: Commander, US Army Communications-Electronics Command and Fort Monmouth, ATTN: AMSEL-LC-LM-LT, Fort Monmouth, New Jersey 07703-5007.

In either case, a reply will be furnished direct to you.

**TABLE OF CONTENTS**

Subject	Section	Page
Scope .....	0.1	1
General Information .....	0.2	1
Maintenance Forms, Records, and Reports .....	0.3	1
Reports of Maintenance and Unsatisfactory Equipment .....	0.3.1	1
Report of Packing and Handling Deficiencies .....	0.3.2	1
Discrepancy in Transportation Deficiency Report (TDR) (SF 361) .....	0.3.3	1
Consolidated Index of Army Publications .....	0.4	1
Purpose of Installation .....	1.	2
End Item or System to be Modified .....	2.	2
Application Times .....	3.	2
Time for Completion of Installation .....	3.1	2
Time for Installation of One Assembly or Component .....	3.2	2
Preparation for Installation .....	4.	2
Preparation of Vehicle .....	4.1	2
Preparation of MK .....	4.2	2
MK, Distribution, and Consumables .....	4.3	3
Required .....	4.4	8
Tools and Test, Measurement, and Diagnostic Equipment (TMDE)		
Installation Procedures .....	5.	9
(mounting base) .....	5.1	11
Installation of Mounting Base, Electrical Equipment MT-6352NRC		
Installation of Cables .....	5.2	13
Installation of Antenna AS-3900NRC (antenna) .....	5.3	18
Installation of Antenna Base .....	5.3.1	18
Installation of Top Antenna Assembly .....	5.3.2	19
Installation of MK-2499NRC .....	5.4	20
Installation of Mounting Base, Electrical Equipment MT-6353NRC .....	5.5	20
Post-Installation and Checkout .....	5.6	21
Appendix A. References .....		A1

**LIST OF ILLUSTRATIONS**

Figure	Title	Page
4-1	MK Illustrated Parts List .....	5
4-2	Illustrated Parts List for Table 4-2 .....	6
4-3	TSEC/KY-57 Illustrated Parts List .....	7
5-1	MK and Radio Installation .....	9
5-2	Mounting Base Installation .....	11
5-3	Cable Installation .....	13
5-4	Antenna Base Installation .....	18
5-5	Top Antenna Assembly Installation .....	19
5-6	MT-6353NRC Mounting Base Installation .....	20
5-7	Cable Diagram .....	22

**LIST OF TABLES**

Number	Title	Page
4-1	MK Parts List for Installation of Radio Set ANNRC-92 Series .....	4
4-2	Additional Items Required for Installation of Radio Set ANNRC-92 Series .....	6
4-3	Additional Items Required for Installation When Using RT-1439NRC .....	7

## 0.1 SCOPE

This technical bulletin provides Installation Instructions for Installation Kit, Electronic Equipment, MK-2408NRC, commonly referred to as the Mounting Kit (MK). The MK shall be installed into the following type of vehicle(s):

- Multiple Launch Rocket System (MLRS), M270

The MK is used for installation of radio set components at field locations. The information contained in this technical bulletin is the official authorization to perform the installation at the unit maintenance level.

### NOTES

- This technical bulletin is not an authorization for requisition or turn-in of vehicles.
- This technical bulletin does not establish quantity or types of vehicles assigned to using units.

This technical bulletin does not contain information on the maintenance or replacement of the MKs. This information is contained in the MAC of TM 11-5820-890-202, TM 11-5820-890-20-4 and RPSTL of TM 11-5820890-20P.

## 0.2 GENERAL INFORMATION.

The MK becomes operable when all the radio set components are installed in the vehicle and correct power is supplied. Refer to TM 11-5820-890-20-1 or TM 11-5820-890-20-4 for installation, Operational (OP) Check instructions, and required maintenance procedures. Refer to TM 11-5820-89020P for repair parts.

Included in the Radio Set ANNRC-92 Series are:

- Radio Set ANNRC-92 (for RT-1439NRC)
- Radio Set ANNRC-92A (for RT-1 523(C)/U)

## 0.3 MAINTENANCE FORMS, RECORDS, AND REPORTS.

**0.3.1 Reports of Maintenance and Unsatisfactory Equipment.** See section 4.2.2.3 for information.

**0.3.2 Report of Packaging and Handling Deficiencies.** See section 4.2.2.1 for information.

**0.3.3 Discrepancy in Transportation Deficiency Report (TDR) (SF361).** See section 4.2.2.2 for information.

## 0.4 CONSOLIDATED INDEX OF ARMY PUBLICATIONS.

Refer to the latest issue of DA Pam 25-30 to determine whether there are new changes, or additional publications pertaining to the equipment.

**1. PURPOSE OF INSTALLATION.**

The Installation Kit, Electronic Equipment, MK-2408NRC (MK) contains the items needed to mount Radio Set ANNRC-92A in Multiple Launch Rocket System (MLRS), M270. If Radio Set ANNRC-92 is to be installed, communications security equipment (TSEC/KY-57) will need to be installed also; see section 5.4 for information. To install MT-6353NRC mounting base, see section 5.5 for instructions.

**2. END ITEM OR SYSTEM TO BE MODIFIED.**

Not applicable.

**3. APPLICATION TIMES.**

**3.1 Time for Completion of Installation.** Using one person, a total of 4.5 work hours is required. Typical vehicle downtime is 4.5 hours.

**3.2 Time for Installation of One Assembly or Component.** The following table lists the time required to install one component. All times have been rounded off to the nearest half hour. The sum of these times will not reflect the typical vehicle downtime.

ITEM	SECTION	TIME
Mounting Base, Electrical Equipment MT-6352NRC	5.1	0.5
Cables	5.2	1.0
Antenna AS-3900NRC	5.3	0.5

**4. PREPARATION FOR INSTALLATION.**

This section explains how to prepare the vehicle and MK for installation.

**4.1 Preparation of Vehicle.** To prepare the vehicle for installation, insure that the site includes adequate lighting and a power source when drilling is required. Inspect the vehicle for damage that could affect installation. Have any such damage repaired before installing MK.

**4.1.1 Items to be Removed.** Remove existing ANNRC-12 radio family installation kit/harness. See TM 11-5820-401-20-2 for removing items used with intercom systems, or TM 11-5820-401-20-1 (used without intercom systems), and TM 9-7440-64820.

**4.1.2 List of Items to be Retained.** Not applicable.

**4.2 Preparation of MK.** To prepare MK, unpack, inspect and check inventory.

**4.2.1 Precautions During Handling.** Observe these steps to prevent equipment damage.

- a. Keep dust covers in place on connectors.
- b. Do not disassemble or modify parts in MK unless authorized to do so.
- c. Keep mounting hardware covered and protected until needed.
- d. When exposed to moisture, rain or salt water, keep all parts dry to prevent corrosion.

## **4.2.2 Unpack and Inspect Equipment.**

**4.2.2.1 Inspect Packaging for Evidence of Damage.** Any shipping damage should be reported on SF364 Report of Discrepancy (ROD) as prescribed in AR 735-11-2/DLAR 4140.55/NAVMATINST 4355.73A/AFR 400-64/MCO 4430.3F.

**4.2.2.2 Unpack and Inventory MK.** If any item is missing, fill out and forward Transportation Deficiency Report (TDR) (SF361) as described in AR 55-38/NAVSUPINST 4610.33C/AFR 75-18/MCO P4610.19D/DLAR 4500.15.

**4.2.2.3 Examine Each Item for Damage.** If any item is damaged, fill out and forward SF364 Report of Discrepancy (ROD) as prescribed in AR 735-11-2/DLAR 4140.55/NAVMATINST 4355.73A/AFR 400-64/MCO 4430.3F. All damages should be reported as prescribed by DA Pam 738-750, as contained in Maintenance Management Update.

## **4.3 MK, Distribution, and Consumables.**

**4.3.1 Items Supplied in MK and/or Required for Installation.** Use Table 4-1 and figure 4-1 to identify and inventory MK parts supplied to install Radio Set AN/VRC-92 Series. Refer to Table 4-2 and figure 4-2 to identify additional items required to install Radio Set AN/VRC-92 Series. Refer to Table 4-3 and figure 4-3 to identify additional items required to install when using RT-1439/VRC.

### **4.3.2 Distribution and Issue Instructions.**

- a. US Forces: Do not requisition MK. They will be shipped automatically.
- b. US Army Depots: Requisition MK through supply channels.
- c. Multiservice: Instructions shall be included for multiservice modifications.
- d. MAP/MAS Countries: Instructions shall be provided for MAP/MAS countries.

Table 4-1. MK Parts List for Installation of Radio Set AN/VRC-92 Series

NSN	ITEM DESCRIPTION AND PART NUMBER	QUANTITY IN MK	SMR CODE	FIGURE, ITEM NO.
5985-01-297-2971	Antenna AS-3900/VRC (A3017899-1)	2	PAOOF A	4-1, 2
5305-00-847-1159	Screw, Cap, Hexagon (3/8-16 x 1 3/4 in) MS35307-365	8	PAOZZA	
5310-00-913-8881	Nut, Hexagon (3/8-16 in) MS51971-3 (Not Used)	8	PAOZZA	
5310-00-061-1258	Washer, Lock, Internal/External-Toothed (3/8 in) MS45904-76 (8 Not used)	16	PAOZZA	
5310-00-889-2527	Washer, Lock, Internal/External-Toothed (5/16 in) MS45904-72	4	PAOZZA	
5306-00-225-9086	Bolt, Machine (5/16-24 x 5/8 in) MS90726-31 (Not Used)	2	PAOZZA	
5330-01-205-2864	Gasket (A3013655-1)	2	PAOZZA	
5975-01-188-8873	Mounting Base, Electrical Equipment MT-6352/VRC (A3013367-1)	1	PAOOF A	4-1, 1
5306-00-225-9089	Bolt, Machine (5/16-24 x 1 in) MS90726-34 (1 Not Used)	5	PAOZZA	
5310-00-889-2527	Washer, Lock, Internal/External-Toothed (5/16 in) MS45904-72 (6 Not Used)	10	PAOZZA	
5310-00-880-7746	Nut, Hexagon (5/16-24 in) MS51968-5 (Not Used)	5	PAOZZA	
5995-01-225-0504	Cable Assembly, Power, Electrical CX-13306/VRC (14 FT, 0 IN) (A3014043-5)	1	PAOZZA	4-1, 7
5995-01-225-1662	Cable Assembly, Radio Frequency CG-3855/VRC (12 FT, 0 IN) (A3014031-12)	1	PAOZZA	4-1, 6
5995-01-219-7030	Cable Assembly, Radio Frequency CG-3855/VRC (7 FT, 0 IN) (A3014031-3)	1	PAOZZA	4-1, 6
5995-01-303-4951	Cable Assembly, Special Purpose, Electrical CX-13313/VRC (2 FT, 7 IN) (A3018360-1)	1	PAOZZA	4-1, 5
5995-01-219-4932	Cable Assembly, Special Purpose, Electrical CX-13300/VRC (5 FT, 0 IN) (A3014044-3)	2	PAOZZA	4-1, 4
5306-00-225-8496	Bolt, Machine (5/16-18 x 5/8 in) MS90725-31	2	PAOZZA	
5340-00-050-2740	Clamp, Loop (3/4-13/64) MS21333-75	6	PAOZZA	
5340-00-057-2906	Clamp, Loop (5/8-13/64) MS21333-73	11	PAOZZA	
5340-00-079-7837	Clamp, Loop (1/4-13/64) MS21333-67	1	PAOZZA	
4020-01-341-8795	Fiber Rope Assembly, Single Leg (A3167672-1)	2	PAOZZA	4-1, 3
5305-00-984-6211	Screw, Machine (No. 10-24 x 5/8 in) MS35206-264	18	PAOZZA	
5975-00-111-3208	Strap, Tiedown, Electrical Components MS3367-5-9	10	PAOZZA	
5310-00-045-3296	Washer, Lock (No. 10) MS35338-43	18	PAOZZA	
	4			

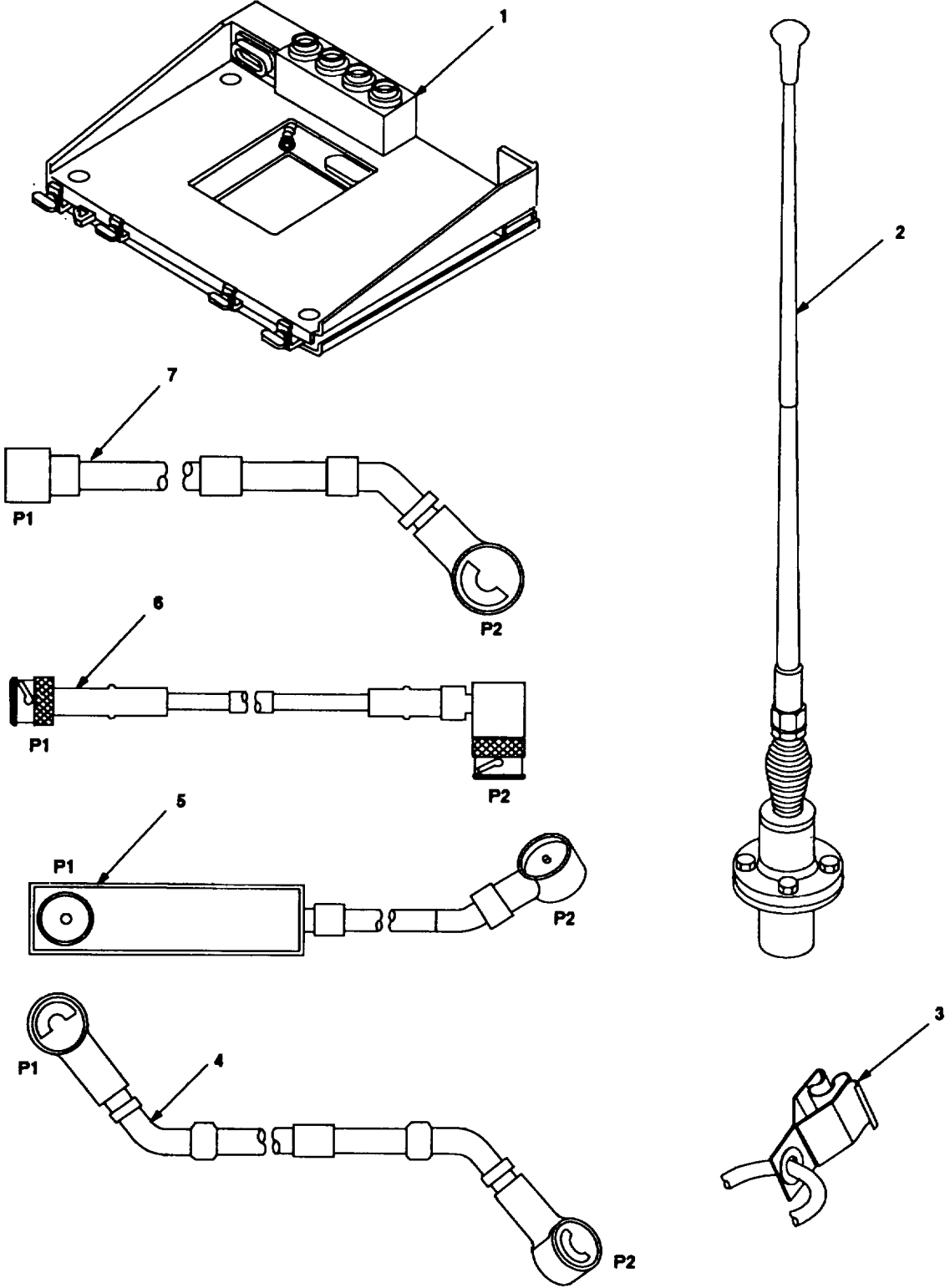


Figure 4-1. MK Illustrated Parts List



Table 4-2. Additional Items Required for Installation of Radio Set AN/IVRC-92 Series

NSN	ITEM DESCRIPTION AND PART NUMBER	QUANTITY IN MK	SMR CODE	FIGURE, ITEM NO.
5975-01-235-1962	Mounting Base, Electrical Equipment MT-6353/VRC (A3014053-1)	1	PAOOHA	4-2, 1
5306-00-225-9089	Bolt, Machine (5/16-24 x 1 in) MS90726-34	4	PAOZZA	
5310-00-880-7746	Nut, Hexagon (5/16-24 in) MS51968-5 (Not Used)	2	PAOZZA	
5310-00-889-2527	Washer, Lock, Internal/External-Toothed (5/16 in) MS45904-72 (2 Not Used)	6	PAOZZA	
5310-00-081-4219	Washer, Flat (5/16 in) MS27183-12	2	PAOZZA	
	Nut Strip (A3014064-1) (Not Used)	1	XBOZZA	
5975-00-111-3208	Strap, Tiedown, Electrical Components MS3367-5-9	4	PAOZZA	
5995-01-300-9324	Cable Assembly, Power, Electrical CX-13303/VRC (4 FT, 6 IN) (A3014040-9)	1	PAOZZA	4-2, 4
5995-01-222-4209	Cable Assembly, Special Purpose, Electrical CX-13291/VRC (3 FT, 0 IN) (A3014037-1)	1	PAOZZA	4-2, 2
5995-01-219-7025	Cable Assembly, Radio Frequency CG-3856/VRC (5 FT, 0 IN) (A3014032-3)	1	PAOZZA	4-2, 3

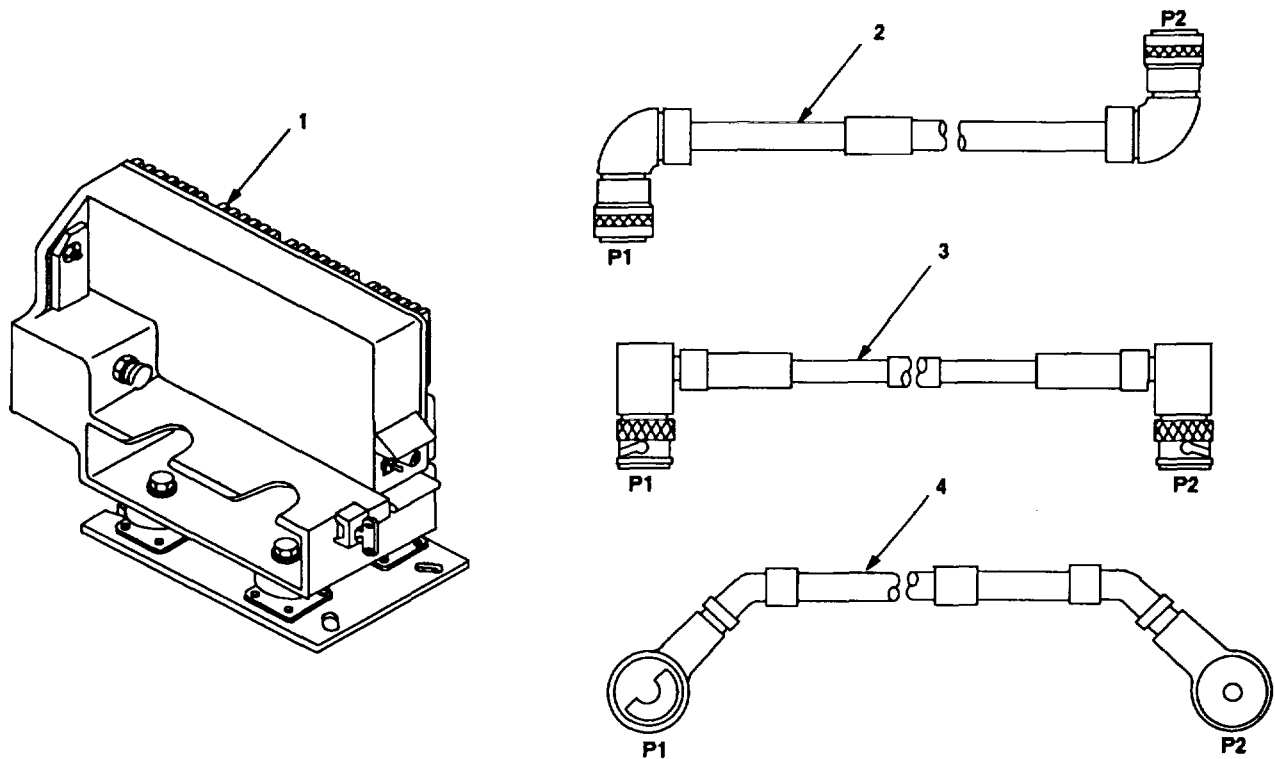


Figure 4-2. Illustrated Parts List for Table 4-2

Table 4-3. Additional Items Required for Installation When Using RT-1439/VRC

NSN	ITEM DESCRIPTION AND PART NUMBER	QUANTITY IN MK	SMR CODE	FIGURE, ITEM NO.
5995-01-226-2437	Cable Assembly, Special Purpose, Electrical CX-13293/VRC (6 FT, 0 IN) (A3014034-2)	2	PAOZZA	4-3, 1
5995-01-225-1655	Cable Assembly, Power, Electrical CX-13303/VRC (1 FT, 6 IN) (A3014040-6)	1	PAOZZA	4-3, 2
5995-01-226-5482	Cable Assembly, Power, Electrical CX-13303/VRC (2 FT, 6 IN) (A3014040-5)	1	PAOZZA	4-3, 3

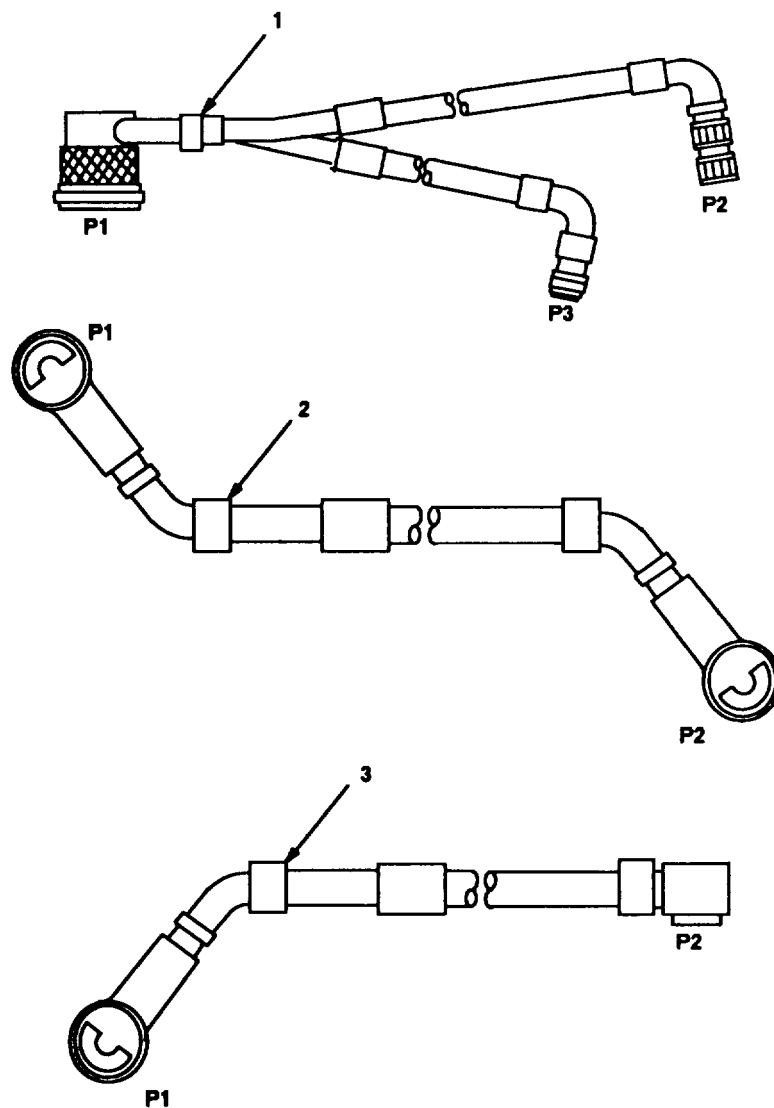


Figure 4-3. TSEC/KY-57 Illustrated Parts List

**4.3.3 Consumable Materials.** The table below lists materials required for installation but not supplied with MK.

NSN	NOMENCLATURE
8040-00-117-8510	Adhesive-Sealant, Clear, RTV
6850-00-880-7616	Silicone Compound, MIL-S-8660

**4.4 Tools and Test, Measurement, and Diagnostic Equipment (TMDE) Required.** The following tools and TMDE are needed for installation

NOMENCLATURE	NSN	QUANTITY
Radio Set*		1
Pocket Knife, Electrician's	5110-00-240-5943	1
Screwdriver, No. 2 Point Phillips, 4 in	5120-00-234-8913	1
Screwdriver, 1/4 in Flatblade, 4 in	5120-00-222-8852	1
Pliers, Round Nose	5120-00-240-6172	1
Pliers, Diagonal Cutting	5110-00-965-0974	1
Wrench Set, Spanner 1 1/8 in	5120-00-658-9805	1
Wrench, Open/Box: 1/2 in	5120-00-228-9506	1
9/16 in	5120-00-228-9507	1
Handle, Socket Wrench	5120-00-240-5364	1
Socket: 1/2 in	5120-00-237-0977	
9/16 in	5120-00-227-67041	

• Use radio issued with your vehicle if available.

**5. INSTALLATION PROCEDURES.**

This section describes where and how to install MK items in the vehicle. See figure 5-1 for an overall view of where vehicular MK equipment, as well as radio components, typically will be installed. When installing MK equipment, be sure to read and follow instructions and illustrations carefully. If Radio Set AN/VRC-92 is to be installed, communications security equipment (TSEC/KY-57) will need to be installed also; see section 5.4 for information. To install MT-6353/VRC mounting base, see section 5.5 for instructions.

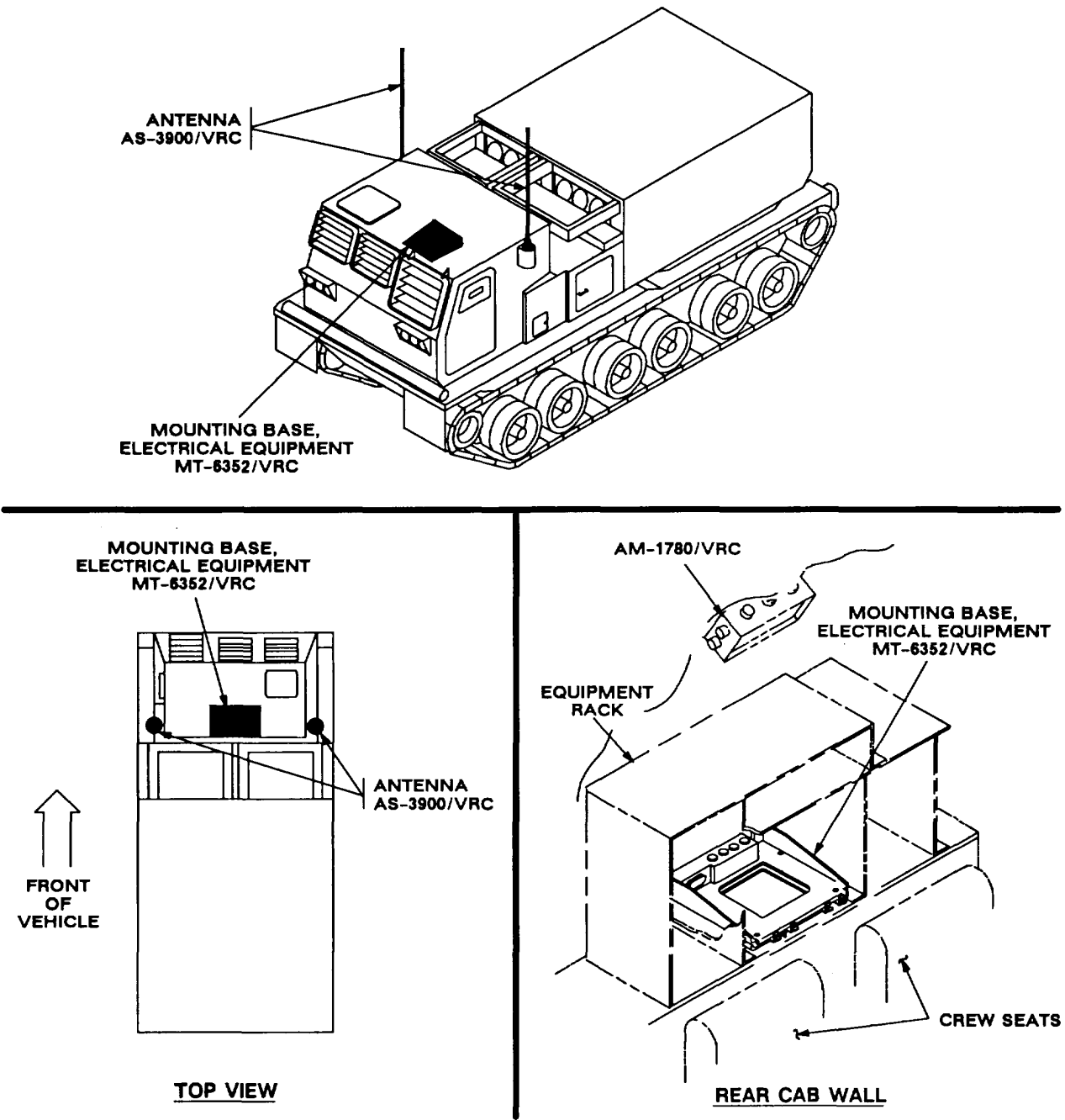


Figure 5-1 (1). MK and Radio Installation: MK Equipment Locations

5. INSTALLATION PROCEDURES. Continued

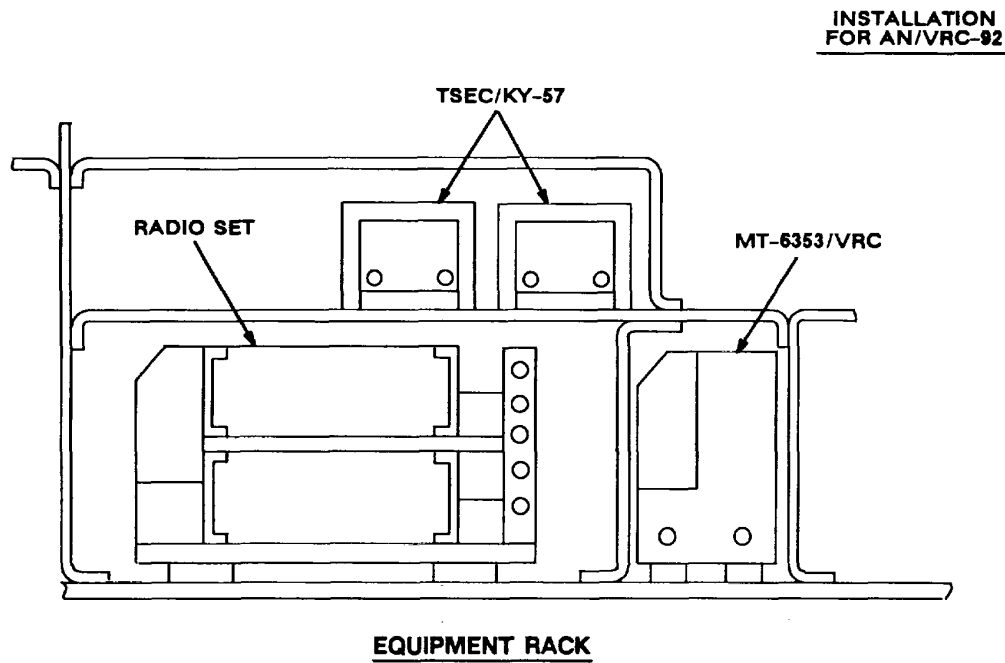
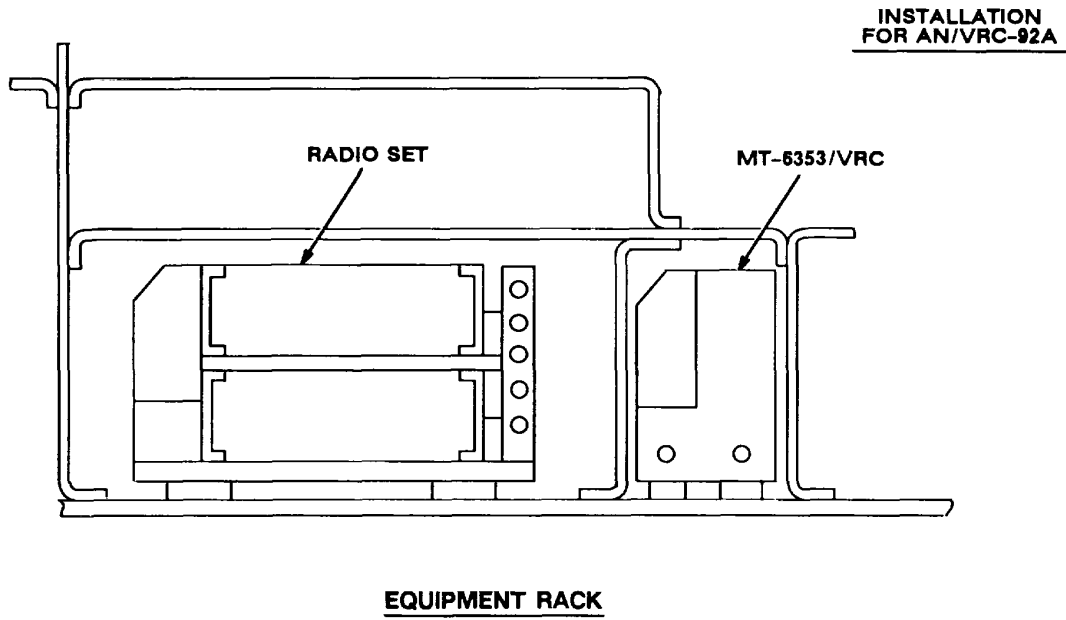


Figure 5-1 (2). MK and Radio Installation: Radio Equipment Locations

**5.1 Installation of Mounting Base, Electrical Equipment MT-63521VRC (mounting base).** Remove and retain attaching bag of 5/16 in mounting hardware for installation. To insure good electrical grounding, any rust, corrosion or paint around mounting holes in equipment rack shelf should be removed before installing the mounting base. See figure 5-2 and perform the following steps.

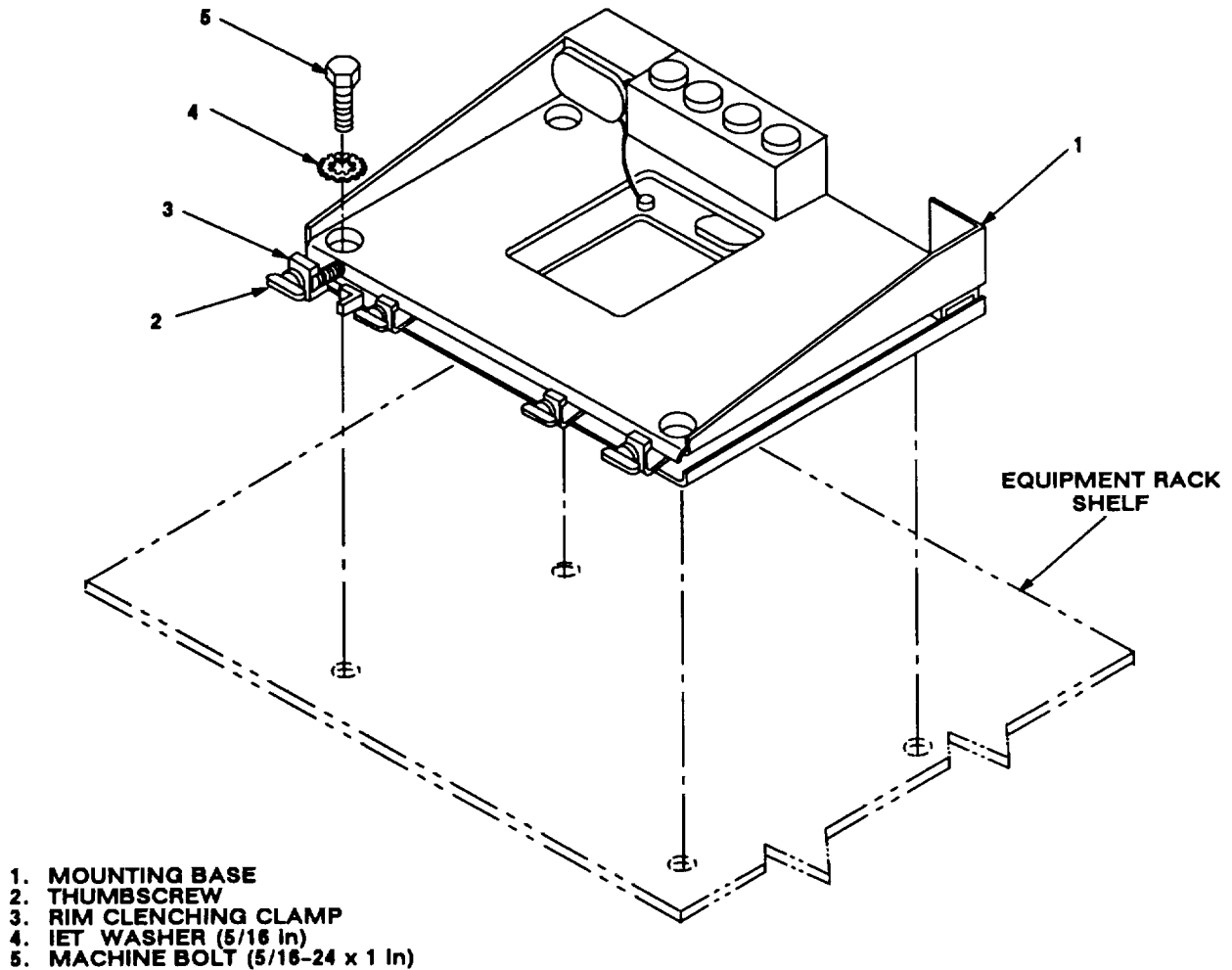


Figure 5-2. Mounting Base Installation

**5.1 Installation of Mounting Base, Electrical Equipment MT-6352/VRC (mounting base).** Continued

ITEM	ACTION	REMARKS
NOTE		
Apply a thin coat of adhesive-sealant to both sides of each internal/external-toothed (IET) washer during installation, and to the area of contact where IET washer is to be placed.		
a. Mounting base (1).	Place on equipment rack shelf. See figure 5-2.	
b. Two outer thumbscrews (2).	Turn ccw until both sets of threads have cleared center of holes.	
c. Mounting base (1).	Aline holes with matching hole pattern in shelf.	
d. Four machine bolts (5) and four IET washers (4).	Install and secure to mounting base (1) and shelf.	Tools: 1/2 in socket.
e. Two outer thumbscrews (2).	Tighten and secure to rim clenching clamps (3) and mounting base (1).	

**5.2 Installation of Cables.** To accomplish the installation, leave loop clamps and tiedown straps loose enough to adjust cable slack and allow easy adjustment of equipment. When installation is complete, tighten and secure clamps and tiedown straps.

**WARNING**

Make sure vehicle power source is positioned OFF or disconnected before installing cables.

ITEM	ACTION	REMARKS
a. Air intake cover and existing mounting hardware.	Temporarily remove from roadside cab wall. See figure 5-3 (1).	
b. RF cable (1) connector P1.	Insert through cable hole, air intake opening and cable guard; then insert through cable access hole and position on top of existing antenna bracket (allowing 6 in of cable slack above bracket).	
c. Air intake cover and existing mounting hardware.	Reinstall.	

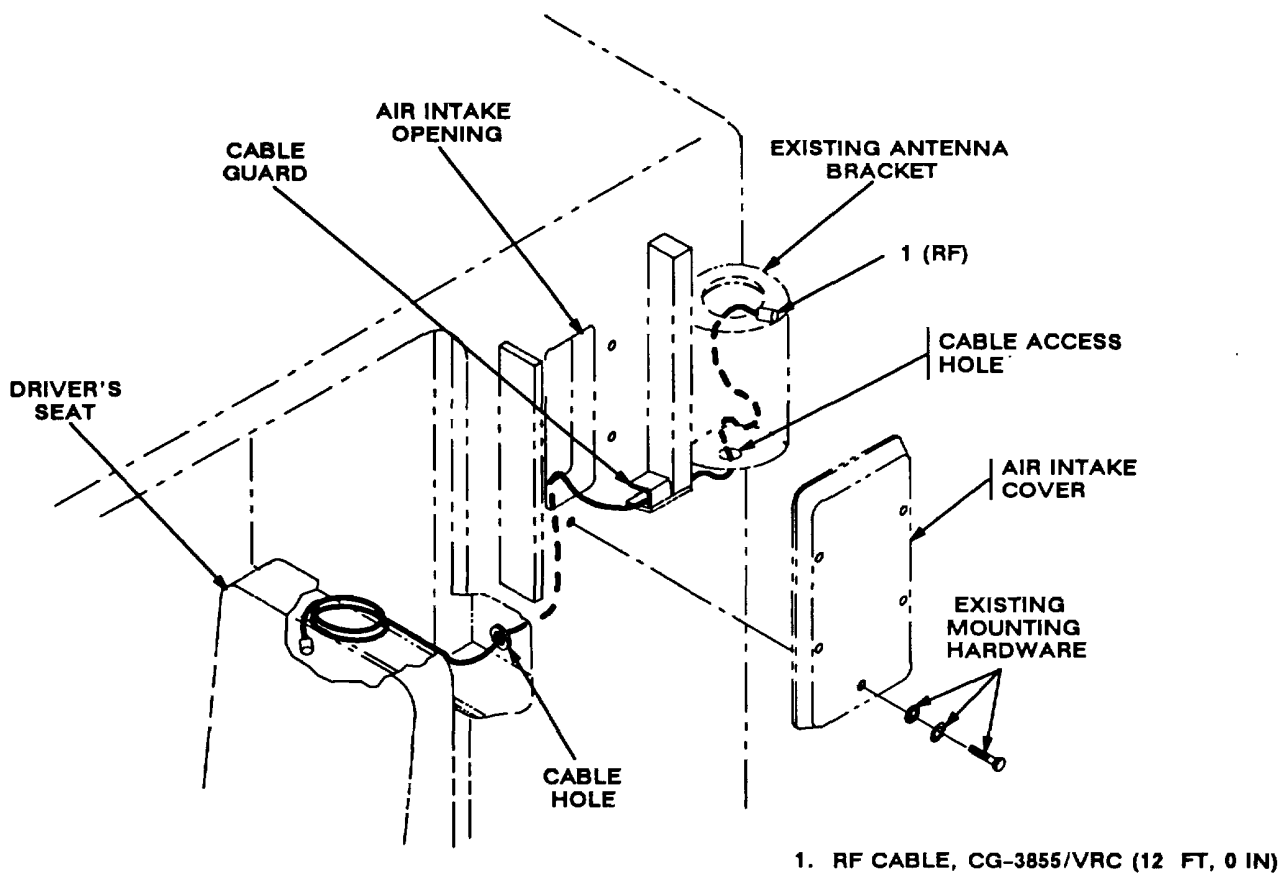


Figure 5-3 (1). Cable Installation: Roadside RF Cabling



5.2 Installation of Cables. Continued

ITEM	ACTION	REMARKS
d. Cable guard and existing mounting hardware	Temporarily remove from curbside cab wall and existing antenna bracket. See figure 5-3 (2).	
e. RF cable (2) connector P1.	Insert through cable hole and position on top of existing antenna bracket (allowing 6 in of cable slack above bracket).	
f. Cable guard and existing mounting hardware.	Reinstall.	

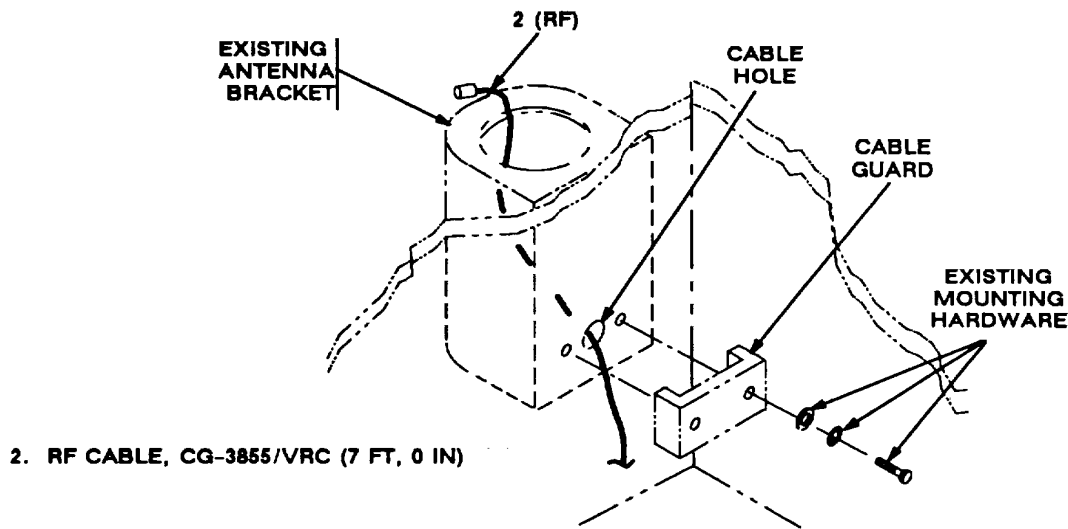


Figure 5-3 (2). Cable Installation: Curbside RF Cabling

g. RF cable (2).	Route behind equipment rack to rear of mounting base (4). See figure 5-3 (3).	
h. RF cable (2) connector	Position on top of mounting base (4).	
i. NBC duct, NBC duct guard, heater duct, rifle butt holder and cable guard.	Temporarily remove from cab. See figure 5-3 (3) for cable guard location.	Other items listed are not shown.
j. Power cable (5) connector P1.	Insert through cable hole in frame member; then connect and secure to power distribution box connector J1.	
k. Power cable (5).	Route between curbside doorway and passenger seat to rear of equipment rack.	
l. Power cable (5) connector P2.	Position on top of mounting base (4).	

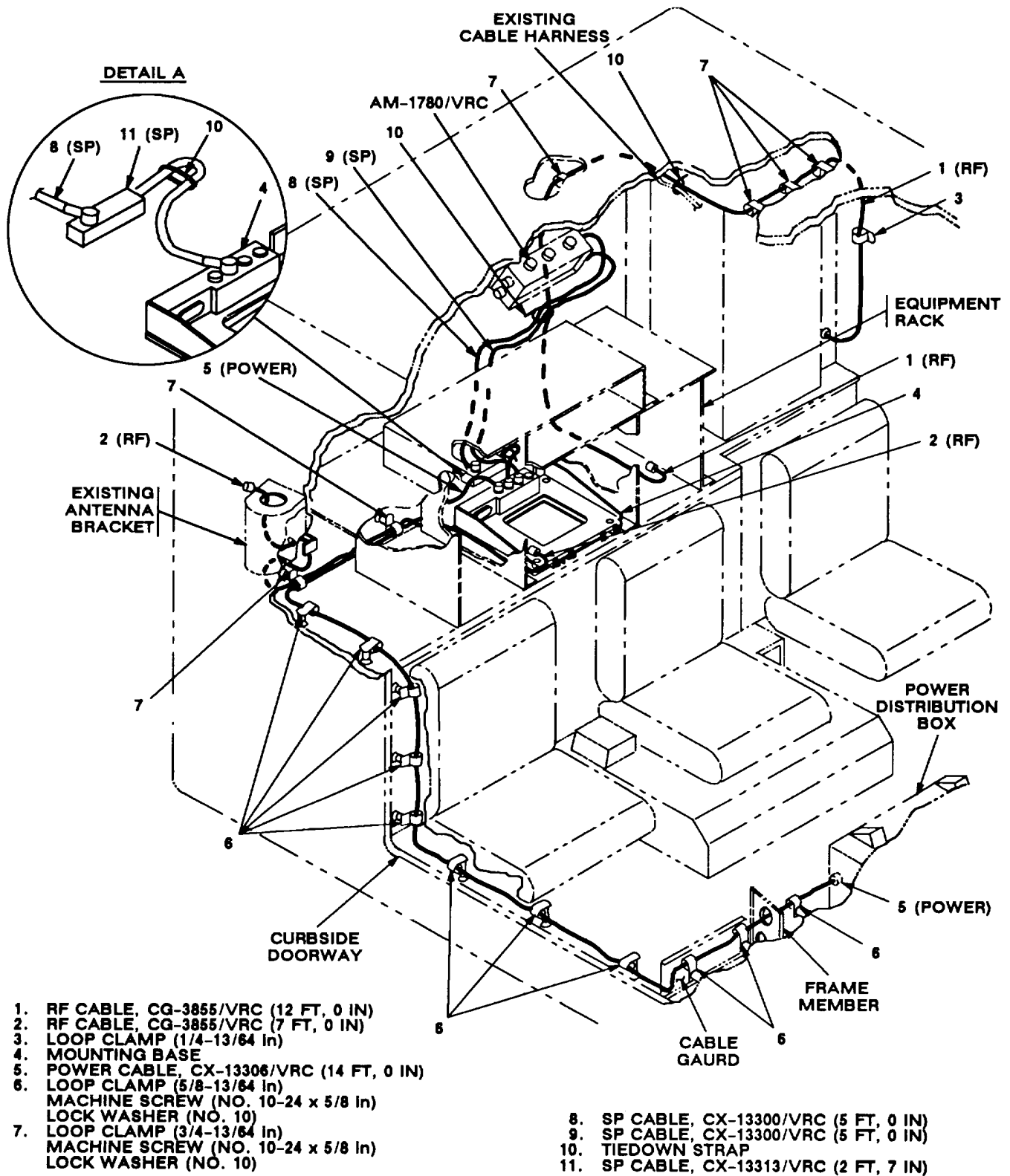


Figure 5-3 (3). Cable Installation: Interior RF, Power and SP Cabling

## 5.2 Installation of Cables. Continued

ITEM	ACTION	REMARKS
m. Eleven loop clamps (6), eleven pan-head machine screws (no. 10-24 x 5/8 in) and eleven lock washers (no.10).	Wrap clamps around power cable (5); then install to existing bosses. See figure 5-3 (3) for location(s).	Tools: Phillips screwdriver.
n. Two loop clamps (7), two pan-head machine screws (no. 10-24 x 5/8 in) and two lock washers (no. 10).	Wrap clamps around power cable (5) and RF cable (2); then install to existing bosses on rear wall.	Tools: Phillips screwdriver.
o. RF cable (1).	Route up roadside wall, across ceiling and down behind AM-1780/VRC to rear of equipment rack. See figure 5-3 (3).	
p. Tiedown strap (10).	Install loosely around RF cable (1) and existing cable harness. See figure 5-3 (3) for location(s).	
q. RF cable (1) connector P2.	Position on right bottom shelf of equipment rack.	
r. Loop clamp (3), pan-head machine screw (no.10-24 x 5/8 in) and lock washer (no. 10).	Wrap clamp around RF cable (1); then install to existing boss on roadside wall.	Tools: Phillips screwdriver.
s. Three loop clamps (7), three pan-head machine screws (no. 10-24 x 5/8 in) and three lock washers (no. 10).	Wrap clamps around RF cable (1); then install to existing bosses on cab ceiling (behind driver's seat).	Tools: Phillips screwdriver.
t. Loop clamp (7), pan-head machine screw (no.10-24 x 5/8 in) and lock washer (no. 10).	Wrap clamp around RF cable (1); then install to existing boss on rear cab ceiling (near AM-1 780/VRC).	Tools: Phillips screwdriver.
u. SP cable (9) connector P1.	Connect and secure to AM-1780/VRC connector J503.	
v. SP cable (8) connector P1.	Connect and secure to AM-1780/VRC connector J501.	
w. SP cables (8, 9). mounting base (4).	Route behind equipment rack to rear of	
x. SP cable (9) connector P2.	Connect and secure to mounting base (4) connector J4.	
y. SP cable (8) connector P2.	Connect and secure to SP cable (11) connector P1. See figure 5-3 (3), detail A.	

**5.2 Installation of Cables.** Continued

ITEM	ACTION	REMARKS
z. SP cable (11) connector P2.	Connect and secure to mounting base (4) connector J3; then secure with tie-down strap (10). See figure 5-3 (3), detail A.	
aa. Tiedown strap (10).	Install loosely around SP cables (8, 9) and RF cable (1). See figure 5-3 (3) for location(s).	
ab. Cable guard, NBC duct, NBC duct guard, heater duct and rifle butt holder (removed in step i).	Reinstall. See figure 5-3 (3) for cable guard location.	
ac. Power cable (5) connector P2.	Connect and secure to mounting base (4) connector J1. See figure 5-3 (3).	

**5.3 Installation of Antenna AS-3900/VRC (antenna).** Use the following procedure to install both antennas. See figures 5-1 (1) for locations.

**5.3.1 Installation of Antenna Base.**

ITEM	ACTION	REMARKS
<b>NOTE</b>		
Apply a thin coat of adhesive-sealant to both sides of each internal/external-toothed (IET) washer during installation, and to the area of contact where IET washer is to be placed.		
a. Ground strap (5).	Temporarily remove from bottom of antenna base (1). See figure 5-4.	Tools: Phillips screwdriver.
b. Ground strap (5), hex-head machine bolt (6) and two IET washers (7).	Install and secure to existing mounting hole in antenna bracket and wall.	Tools: 1/2 in socket.
c. Gasket (4).	Apply a thin coat of silicone compound to both sides. Place on existing antenna bracket and align mounting holes.	
d. Ground strap (5).	Reinstall to antenna base (1).	Tools: Phillips screwdriver.
e. RF cable (8) connector P1.	Connect and secure to antenna base (1) connector J1.	
f. Antenna base (1).	Place on top of gasket (4) and antenna bracket; then align mounting holes.	
g. Four cap screws (2) and four IET washers (3).	Install and secure to antenna base (1) and antenna bracket.	Tools: 9/16 in socket.

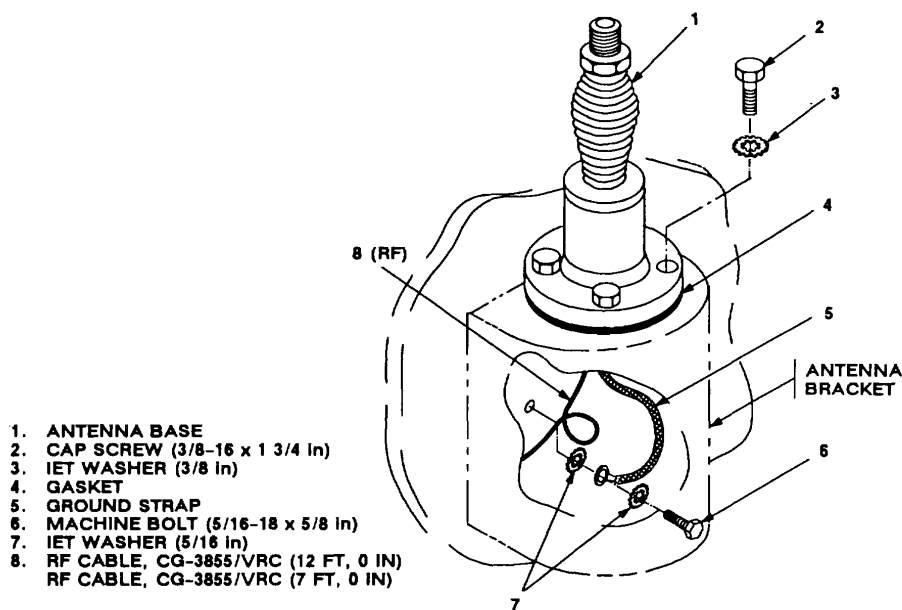


Figure 5-4. Antenna Base Installation

**5.3.2 Installation of Top Antenna Assembly.** The top portion of the antenna includes a lower element and an upper element (with installed cap). Use the following procedure to assemble, install and tie down all antennas.

ITEM	ACTION	REMARKS
a. Antenna elements (1, 2).	Apply silicone compound to element threads and assemble. See figure 5-3.	
b. Antenna element (2).	Install and hand-tighten to antenna base (3).	
c. Lock wire (4).	Install to antenna element (2) and antenna base (3). See figure 5-3, detail A.	
	Cut and remove excess wire with diagonal cutting pliers.	
d. Fiber rope assembly (5).	Attach clip to antenna element (1). Tie rope to vehicle to position antenna in desired location. See figure 5-3, detail B.	

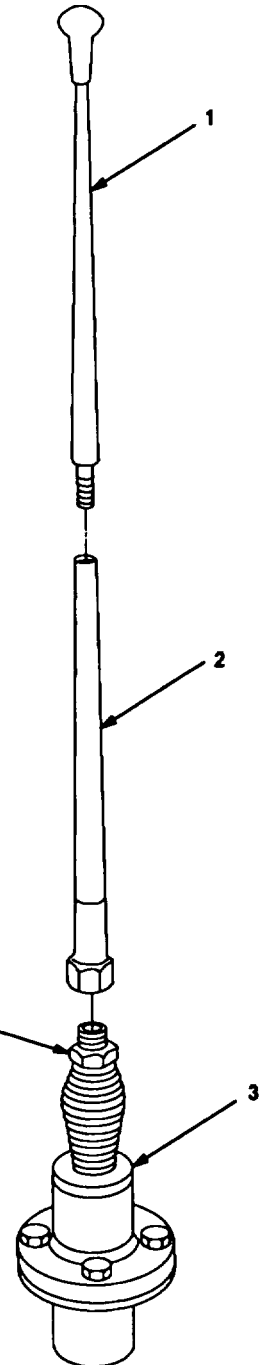
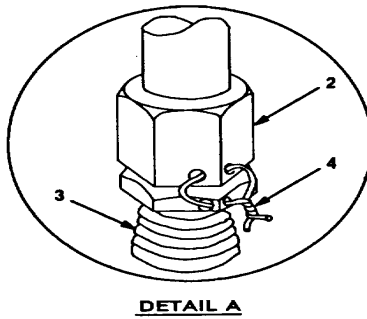
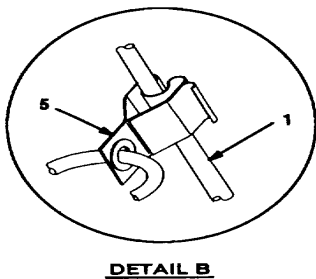


Figure 5-5. Top Antenna Assembly Installation

**5.4 Installation of MK-2499/VRC.** For Radio Set AN/VRC-92, use the following instructions to install MK-2499/VRC (TSECI/KY-57 security equipment) in the location shown in figure 5-1 (2). Refer to section 5.6 for connection of cables.

**5.5 Installation of Mounting Base, Electrical Equipment MT-6353/VRC.** Use the following instructions to install MT-6353/VRC mounting base in the location shown in figure 5-1 (2). Refer to section 5.6 for connection of cables.

ITEM	ACTION	REMARKS
------	--------	---------

**NOTE**

Apply a thin coat of adhesive-sealant to both sides of each internal/external-toothed (IET) washer during installation, and to the area of contact where IET washer is to be placed.

- |                                   |  |
|-----------------------------------|--|
| a. MT-6353/VRC mounting base (1). | Place on equipment rack shelf over mounting holes. See figure 5-6. |
|-----------------------------------|--|

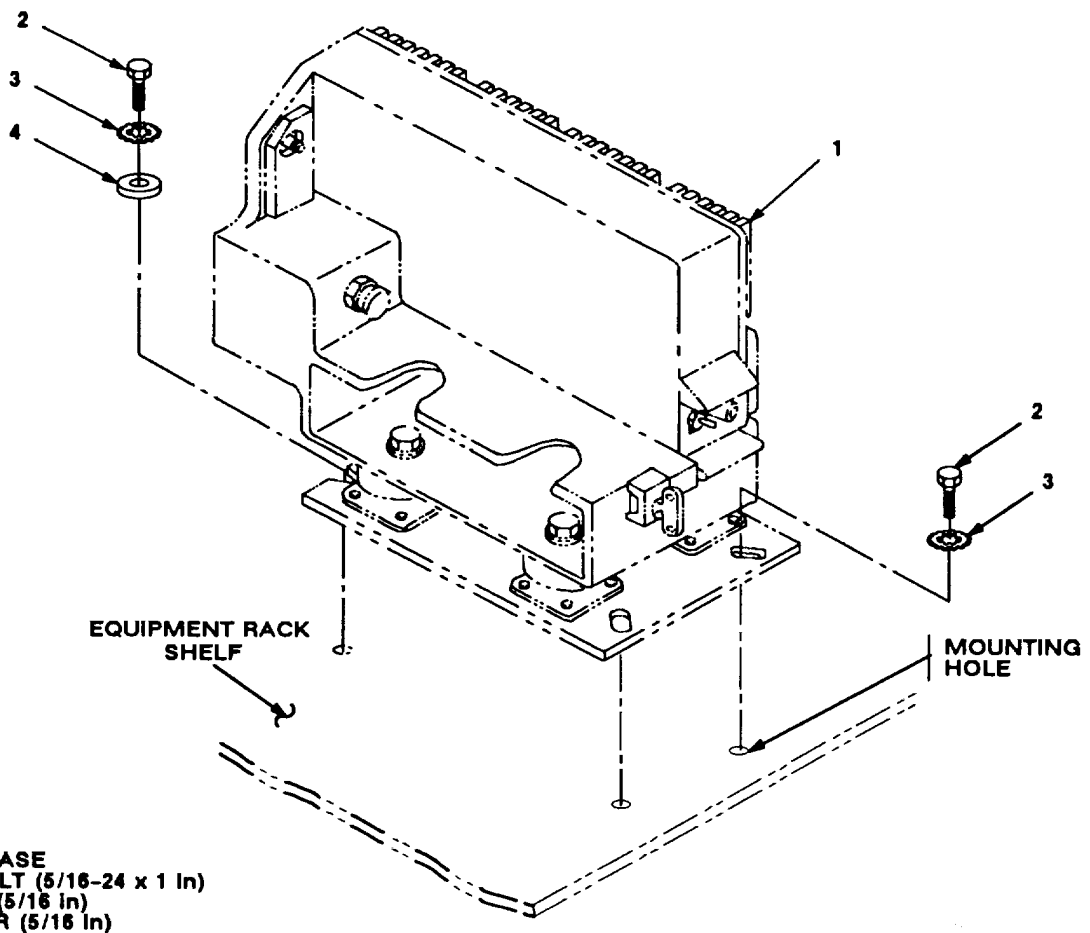


Figure 5-6. MT-6353/VRC Mounting Base Installation

**5.5 Installation of Mounting Base, Electrical Equipment MT-6353/VRC.** Continued

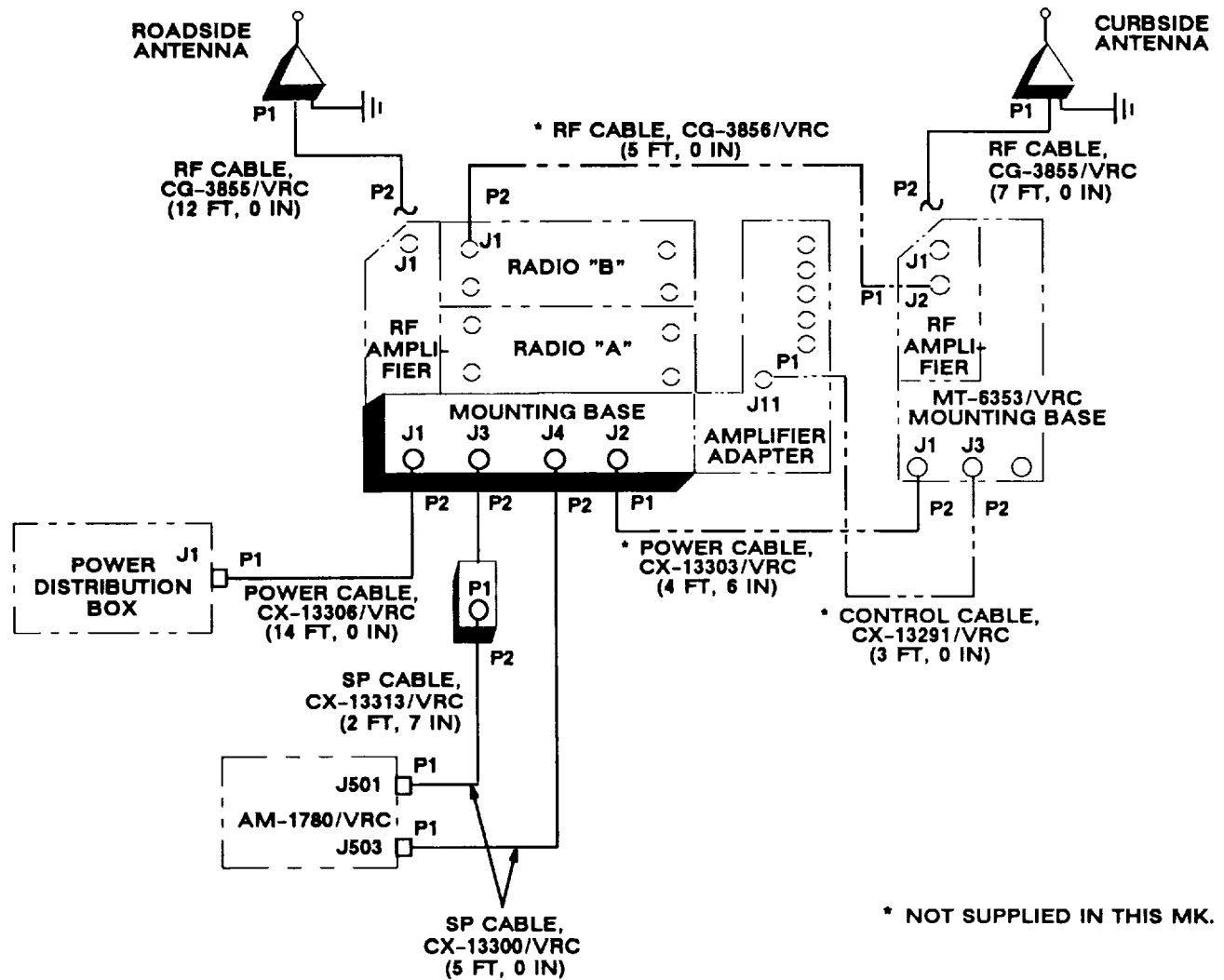
ITEM	ACTION	REMARKS
<b>NOTE</b>		
Before proceeding, connect and secure CX-13291NRC control cable and CX-13303NRC power cable to MT-6353NRC mounting base. (Refer to section 5.6, step b.) To connect CX-1 3303NRC power cable properly, rekey P2 connector using a 1 1/8 in spanner wrench to rotate connector ring ccw 30 degrees (one indexing tooth).		
b. MT-6353NRC mounting base (1).	Aline front holes and rear slots with matching hole pattern in shelf. See figure 5-6.	
c. Two machine bolts (2) and two IET washers (3).	Install and secure to mounting base (1) front holes.	Tools: 1/2 in socket.
d. Two machine bolts (2), two IET washers (3) and two flat washers (4).	Install and secure to mounting base (1) rear slots.	Tools: 1/2 in open/box wrench.

**5.6 Post-Installation and Checkout.** After equipment is installed and cables are connected, perform the following steps.

ITEM	ACTION	REMARKS
a. Equipment.	Check for secure mounting. Check for loose parts, connectors and mounting hardware.	
b. Cables.	Check for proper installation and connection of cables. See figure 5-7 for cable connections. Unused cables should be stowed in appropriate place inside the vehicle.	
c. Loop clamps.	Check that all have been properly installed and tightened.	
d. Protective covers.	Insure that all installed cables are covered when not in use or connected.	
e. Radio issued with vehicle.	Install and connect cables. See TM 11-5820-890-20-1 or TM 11-5820-890-20-4 for installation and Operational (OP) Check instructions.	
f. MK line replaceable units.	See TM 11-5820-890-20P for Repair Parts and Special Tools List (RPSTL) information.	



5.6 Post-Installation and Checkout. Continued



CABLE ASSEMBLY	FROM			TO		
	CABLE CONN.	UNIT	UNIT CONN.	CABLE CONN.	UNIT	UNIT CONN.
CX-13306/VRC (14 FT, 0 IN)	P2	Mounting base	J1	P1	Power distribution box	J1
CG-3855/VRC (12 FT, 0 IN)	P2	RF amplifier	J1	P1	Roadside antenna base	J1
CG-3855/VRC (7 FT, 0 IN)	P2	RF amplifier (MT-6353/VRC)	J1	P1	Curbside antenna base	J1
CX-13313/VRC (2 FT, 7 IN)	P2	Mounting base	J3	P1	CX-13300/VRC (5 FT, 0 IN)	P2

Figure 5-7 (1). Cable Diagram: For ANIVRC-92A

## 5.6 Post-Installation and Checkout. Continued

CABLE ASSEMBLY	FROM			TO		
	CABLE CONN.	UNIT	UNIT CONN.	CABLE CONN.	UNIT	UNIT CONN.
CX-13300/VRC (5 FT, 0 IN)	P2	CX-133131VRC (2 FT, 7 IN)	P1	P1	AM-1780/VRC	J501
CX-13300/VRC (5 FT, 0 IN)	P2	Mounting base	J4	P1	AM-1780/VRC	J503
* CX-13291/VRC (3 FT, 0 IN)	P1	Amplifier-adapter	J1	P2	MT-6353/VRC mounting base	J3
* CG-3856/VRC (5 FT, 0 IN)	P2	Radio 'B'	J1	P1	RF amplifier (MT-6353/VRC)	J2
* CX-13303/VRC (4 FT, 6 IN)	P1	Mounting base	J2	P2	MT-6353/VRC mounting base	J1

\* Not supplied in this MK.

Figure 5-7 (1). Cable Diagram: For AN/VRC-92A Continued

5.6 Post-Installation and Checkout. Continued

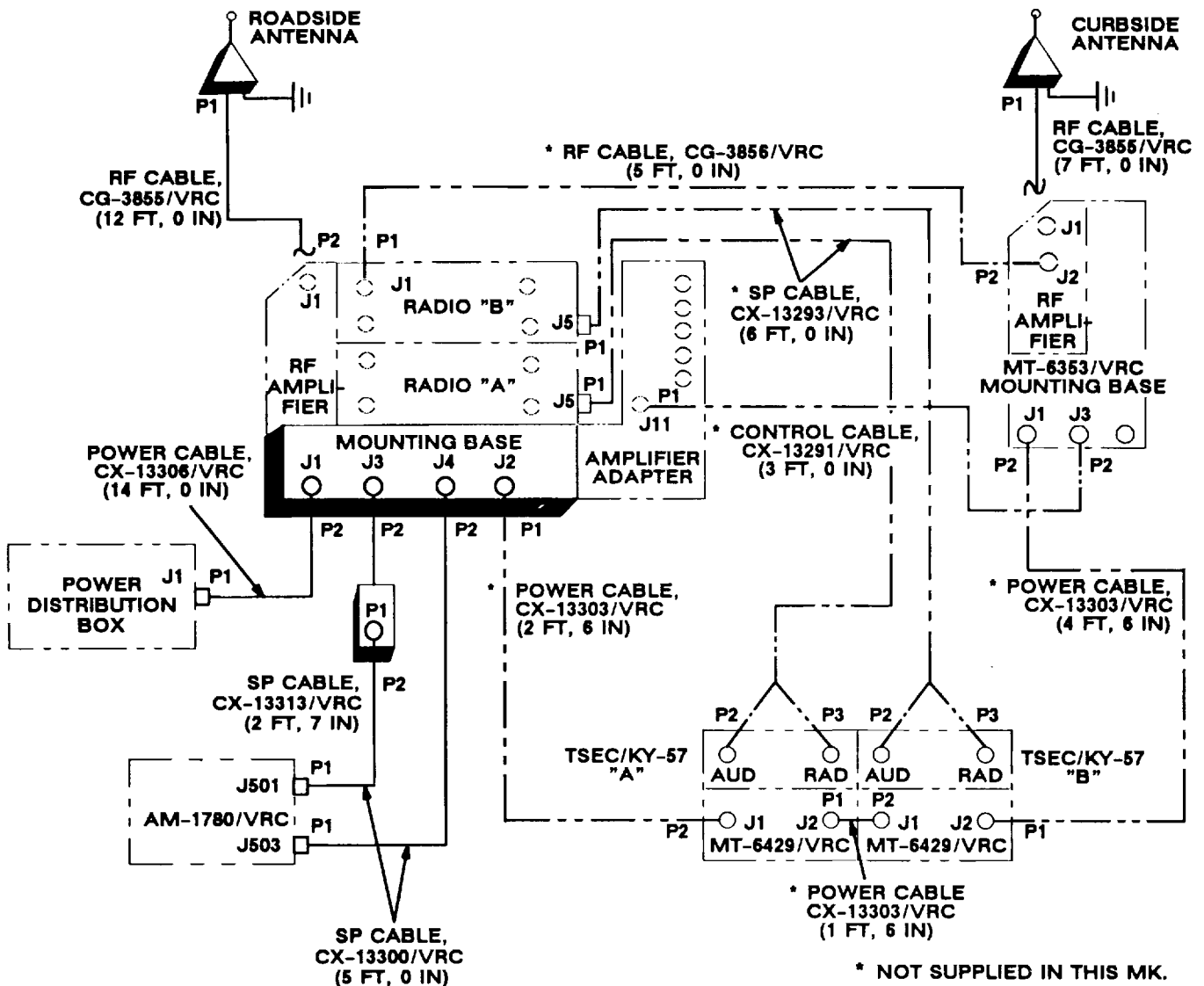


Figure 5-7 (2). Cable Diagram: For ANIVRC-92

## 5.6 Post-Installation and Checkout. Continued

CABLE ASSEMBLY	FROM			TO		
	CABLE CONN.	UNIT	UNIT CONN.	CABLE CONN.	UNIT	UNIT CONN.
CX-13313/VRC (2 FT, 7 IN)	P2	Mounting base	J3	P1	CX-13300/VRC (5 FT, 0 IN)	P2
CX-13300/VRC (5 FT, 0 IN)	P2	CX-13313/VRC	P1	P1	AM-1780/VRC (2 FT, 7 IN)	J501
CX-13300/VRC (5 FT, 0 IN)	P2	Mounting base	J4	P1	AM-1780/VRC	J503
* CX-13303/VRC (1 FT, 6 IN)	P1	MT-6429/VRC "A"	J2	P2	MT-6429/VRC 'B"	J1
* CX-13303/VRC (2 FT, 6 IN)	P1	Mounting base	J2	P2	MT-6429/VRC "A"	J1
* CX-13293/VRC (6 FT, 0 IN)	P1	Radio 'B"	J5	P2 P3	TSEC/KY-57 'B"	AUD RAD
* CX-13293/VRC (6 FT, 0 IN)	P1	Radio 'A"	J5	P2 P3	TSEC/KY-57 "A"	AUD RAD
* CX-13291/VRC (3 FT, 0 IN)	P1	Amplifier-adapter	J11	P2	MT-6353/VRC mounting base	J3
* CG-3856/VRC (5 FT, 0 IN)	P1	Radio 'B"	J1	P2	RF amplifier (MT-6353/VRC)	J2
* CX-13303/VRC (4 FT, 6 IN)	P1	MT-6429/VRC "B"	J2	P2	MT-6353/VRC mounting base	J1
* Not supplied in this MK.						

Figure 5-7 (2). Cable Diagram: For AN/VRC-92 Continued

## APPENDIX A

## REFERENCES

---

AMDF	Army Master Data File (Microfiche)
AR 710-2	Supply Policy Below the Wholesale Level as Contained in Unit Supply UPDATE
AR 725-50	Requisitioning, Receipt and Issuing System in UPDATE
DA Pam 25-30	Consolidated Index of Army Publications (Microfiche)
DA Pam 710-2-1	Using Unit Supply System Manual Procedures as Contained in Unit Supply UPDATE
SB 11-131-2	Vehicular Radio Sets and Authorized Installations (SINCGARS)
TM 11-5820-89010-1	Operator's Manual (ICOM Radio Sets)
TM 11-5820-89010-3	Operator's Manual (Non-ICOM Radio Sets)
TM 11-5820-890-201	Unit Maintenance Manual (ICOM Radio Sets, Vol. 1)
TM 11-5820-890-202	Unit Maintenance Manual (ICOM Radio Sets, Vol. 2)
TM 11-5820-890-20-3	Unit Maintenance Manual Handbook (ICOM Radio Sets)
TM 11-5820-890-204	Unit Maintenance Manual (Non-ICOM Radio Sets)
TM 11-5820-890-20P	Repair Parts and Special Tools List

**A-1/(A-2 blank)**

TB 11-5820-890-20-76

By Order of the Secretary of the Army:

GORDON R. SULLIVAN  
General, United States Army  
Chief of Staff

Official:

  
MILTON H. HAMILTON  
Administrative Assistant to the  
Secretary of the Army  
06088

DISTRIBUTION:

To be distributed in accordance with DA Form 12-36-E, block  
9596 requirements for TB 11-5820-890-20-76.

\*U.S. GOVERNMENT PRINTING OFFICE: 1994 - 510-106/00106

RECOMMENDED CHANGES TO EQUIPMENT TECHNICAL PUBLICATIONS



THEN... JOT DOWN THE DOPE ABOUT IT ON THIS FORM, CAREFULLY TEAR IT OUT, FOLD IT AND DROP IT IN THE MAIL!

**SOMETHING WRONG WITH THIS PUBLICATION?**

FROM: (PRINT YOUR UNIT'S COMPLETE ADDRESS)

DATE SENT

PUBLICATION NUMBER

PUBLICATION DATE

PUBLICATION TITLE

BE EXACT... PIN-POINT WHERE IT IS

IN THIS SPACE TELL WHAT IS WRONG AND WHAT SHOULD BE DONE ABOUT IT:

PAGE NO.	PARA-GRAPH	FIGURE NO.	TABLE NO.
----------	------------	------------	-----------

TEAR ALONG PERFORATED LINE

PRINTED NAME, GRADE OR TITLE, AND TELEPHONE NUMBER

SIGN HERE:

DA FORM 2028-2 JUL 79

PREVIOUS EDITIONS ARE OBSOLETE.

P.S.—IF YOUR OUTFIT WANTS TO KNOW ABOUT YOUR RECOMMENDATION MAKE A CARBON COPY OF THIS AND GIVE IT TO YOUR HEADQUARTERS.

